



# Geraldine Pu



Draw what you would pack in your lunch box!



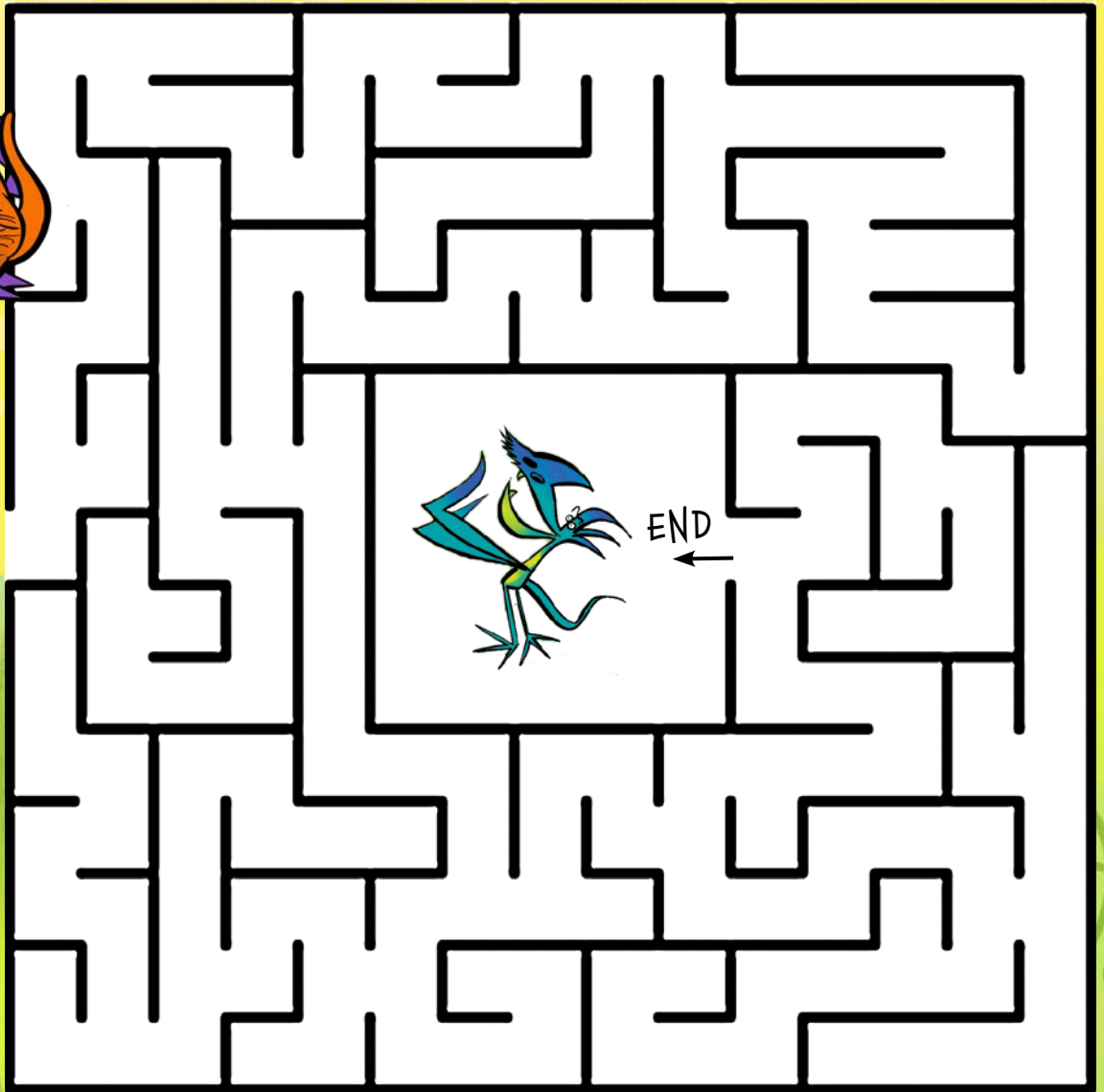
READY-TO-READ **GRAPHICS**



By Maggie P. Chang

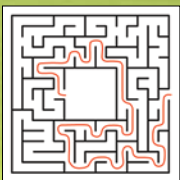
# THUNDER AND CLUCK

Help Thunder find Cluck!



START →

← END

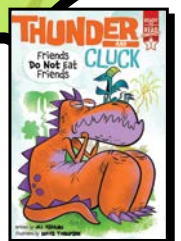


ANSWER:

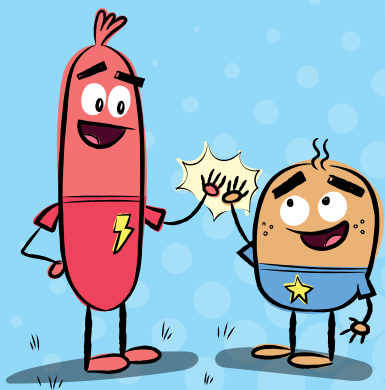


READY-TO-READ *GRAPHICS*

Thunder & Cluck: Illustrations copyright © 2021 by Christopher M. Thompson

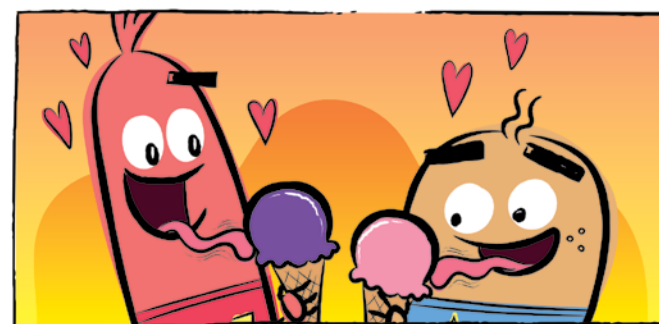
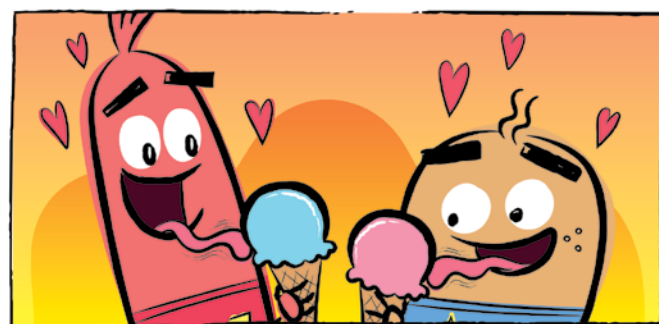
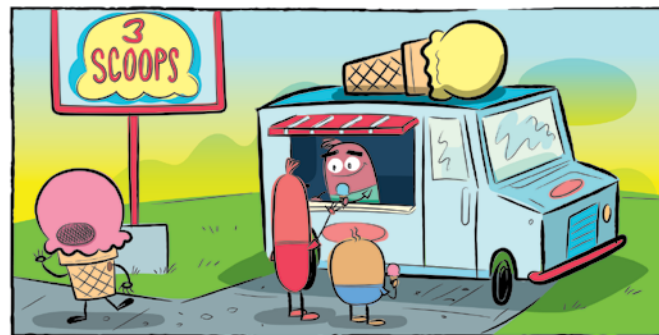
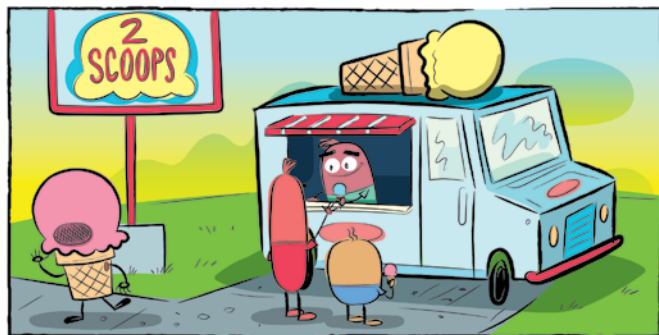


By Jill Esbaum, illustrated by Miles Thompson



# NUGGET AND DOG

Circle the differences!



ANSWER:



READY-TO-READ GRAPHICS

Nugget & Dog: Illustrations copyright © 2021 by Jason Tharp



By Jason Tharp